

THE PRECINCT
LUXURY APARTMENTS

THE PRECINCT

LUXURY APARTMENTS

The Waterfall area is synonymous with a lifestyle that is unsurpassed in the South African property market.

The Precinct Luxury Apartments is located adjacent to Waterfall Estates, and not only is it also developed by Century Property Developments, but it also shares the same philosophy when it comes to privacy, space, security and lifestyle. The development is designed around our beautiful South African climate and encourages an active, healthy lifestyle with numerous outdoor facilities within the indigenous landscape.

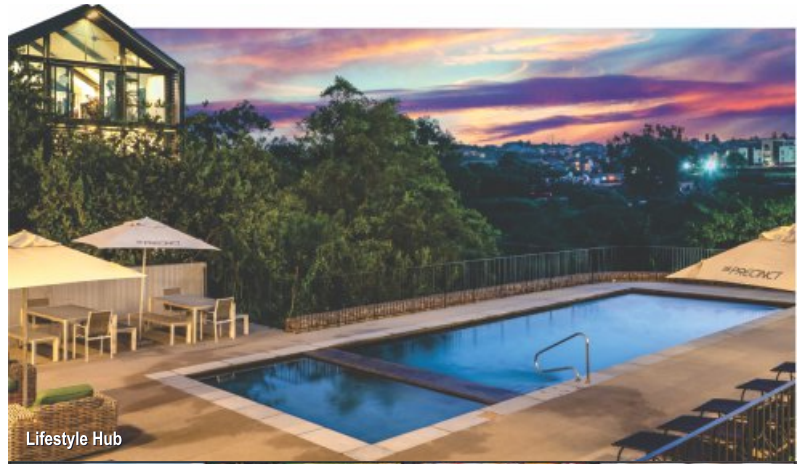
Access is restricted by two secure gatehouses which is manned 24 hours a day. Access will only be granted to residents and their approved guests.

Units come with **access to FREE internet**, and layouts range from one-, two-, three- and four-bedroom options.

The upmarket **Lifestyle Centre** boasts a restaurant and bar, double-storey gym, a luxurious spa and salon, a business centre, games room and movie theatre/auditorium.

Outdoor facilities include several children's play parks with shaded pavilions, a swimming pool, walking and running trails, multi-purpose sports fields (tennis, soccer, basketball, padel court), "Splash Zone" and supertube.

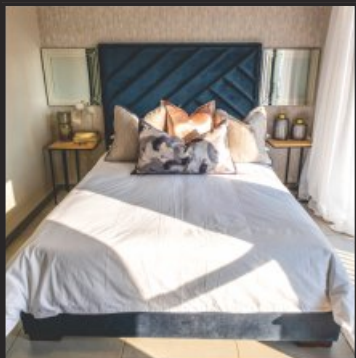
The Precinct Luxury Apartments is **conveniently located** in close proximity to numerous schools, shopping centres like the Mall of Africa, Mushroom Farm Centre and the main arterial highway.



Lifestyle Hub



All units and the Lifestyle Hub have access to **FREE internet!**



OUR LIGHTS ARE ALWAYS ON!

- Every block at The Precinct Luxury Apartments provides access to **solar back-up, as well as inverters** to ensure that your lights are always working.
- The **internet access is always working** (fibre), meaning that you can always catch up on your favourite shows.
- Most units have **gas hobs**, to allow you to cook during load-shedding!
- Our two gatehouses have **constant power supply**, and the restaurant in the Lifestyle Hub has **back-up generator power** - so there's no need to cook.

Image gallery of The Precinct's Lifestyle Hub



Informal Restaurant



Wood-fired Pizza



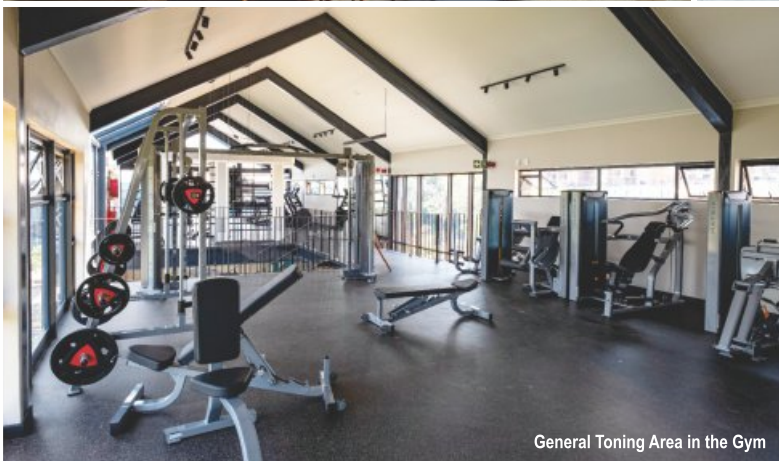
Pool Deck



Private Function Room



Formal Restaurant and Bar



General Toning Area in the Gym



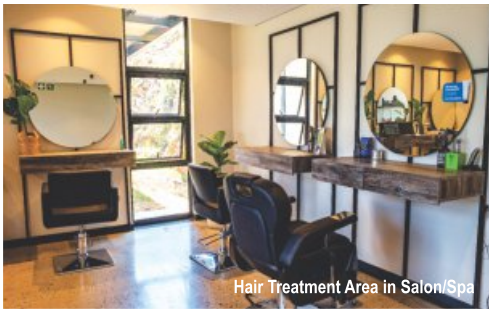
Pool Deck



Games Room



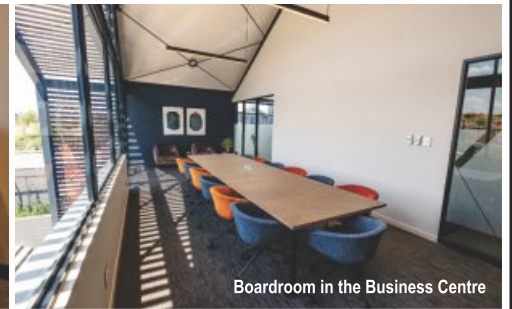
Cinema



Hair Treatment Area in Salon/Spa



Pedicure Station in the Salon/Spa



Boardroom in the Business Centre



- | | | | |
|--------------------------------|----------------------------|----------------------------|--------------------------|
| Gatehouse with Security Office | Spa and Salon | Kids' Play Area | Tennis Court |
| Leasing and Admin Office | Business Centre | Shaded Pavilion | Walking / Running Trails |
| Restaurant | Games Room | Outdoor Movie Area | Swimming Pool |
| Gymnasium | Indoor Cinema / Auditorium | Multi-purpose Sports Field | Kids' Splash Park |
| | | Padel Court | Supertube |





Ground Floor Unit

- 3 x Bedrooms
- 2 x Bathrooms

Total: 116m² - 121m²



Please Note: Unit layouts may be mirrored according to their position within the building. Please ensure you have visited the actual unit before signing the lease agreement.



Second Floor Unit

- 2 x Bedrooms
- 2 x Bathrooms

Total: 108m² - 115m²



Top Floor Unit

- 1 x Bedroom
- 1 x Bathroom

Total: 56m²



Top Floor Unit

- 1 x Bedroom
- 1 x Bathroom

Total: 41m²





4-Bed Unit (Phase 4)

- 4 x Bedrooms
- 2 x Bathrooms

Total: 132m²

1-Bed Unit (Phase 4)

- 1 x Bedrooms
- 1 x Bathrooms

Total: 58m²



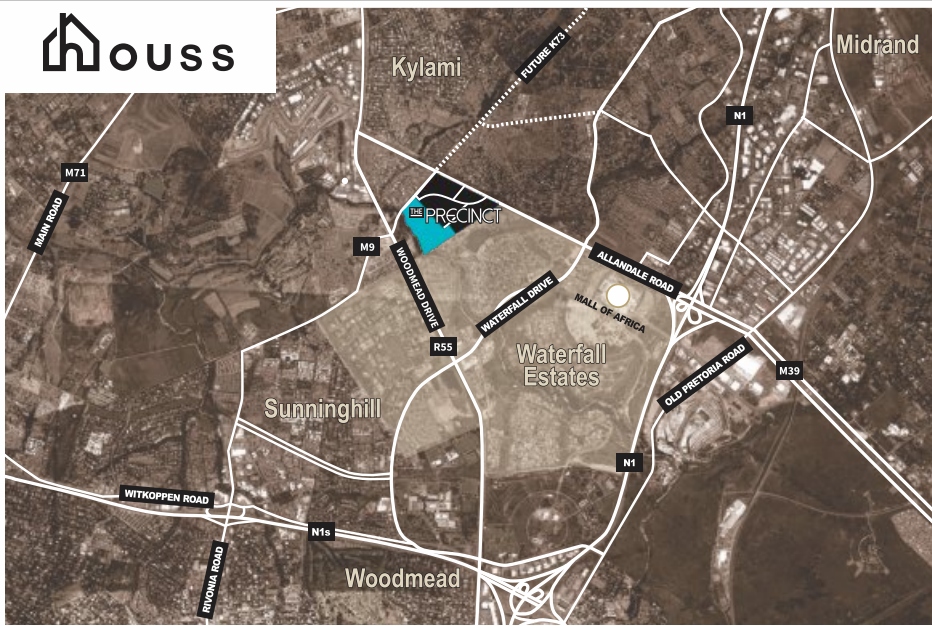
2-Bed Unit (Phase 4)

- 2 x Bedroom
- 2 x Bathroom

Total: 91m²



houss



For more information, please visit
www.houss.co.za

Rental office hours:
09h00-17h00, 7 days a week



Indawo Lifestyle Apartments
Waterfall, Mushroom Rd.



Ndlovu Lifestyle Apartments
Midrand, Olifantsfontein Rd.



Nexus Lifestyle Apartments
Helderfontein, Winnie Mandela Dr



Meander Lifestyle Apartments
Riversands, Erling Rd.



5ive on Thirteenth Lifestyle Apartments
Northcliff/Fairlands, 13th Ave.



The Villas, Waterfall
Waterfall Estates, Barbet Cres.

For more information on any of these developments, contact us on [011 300 8702](tel:0113008702)