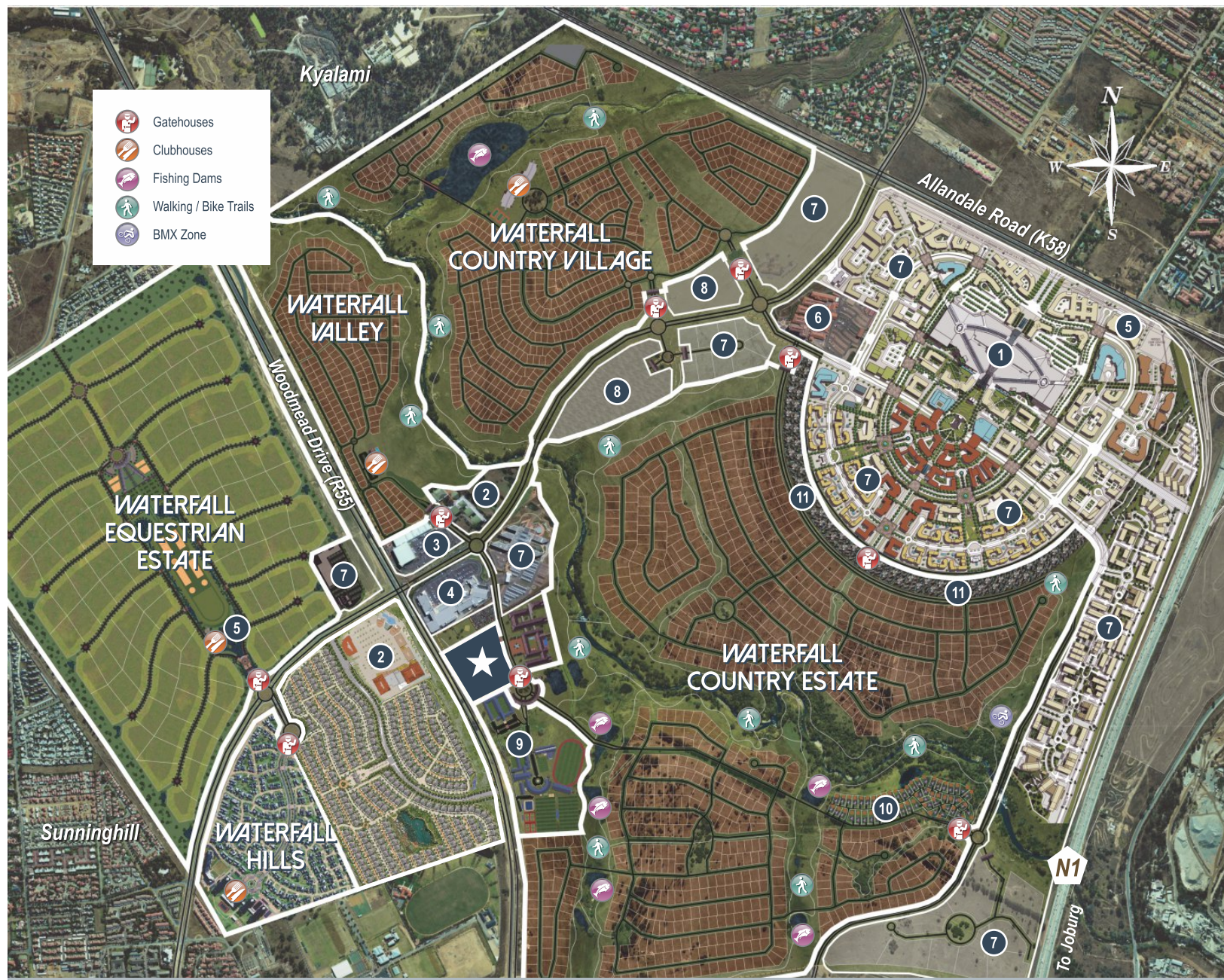




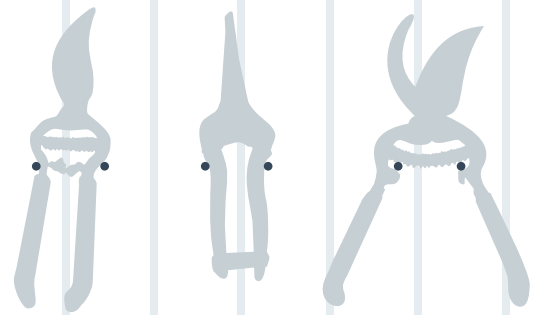
the
SHEDS

@ WATERFALL



- | | | |
|--|-----------------------------------|--------------------------|
| 1 Mall of Africa | 5 Hotels (Riboville, City Lodge) | 9 Reddam House Waterfall |
| 2 Retail Parks | 6 Netcare Waterfall City Hospital | 10 Waterfall Crescent |
| 3 Waterfall Lifestyle Centre (Virgin Active) | 7 Corporate Nodes / Showrooms | 11 The Villas, Waterfall |
| 4 Maxwell Corner Shopping Centre | 8 Curro Castle Waterfall | ★ The Sheds @ Waterfall |

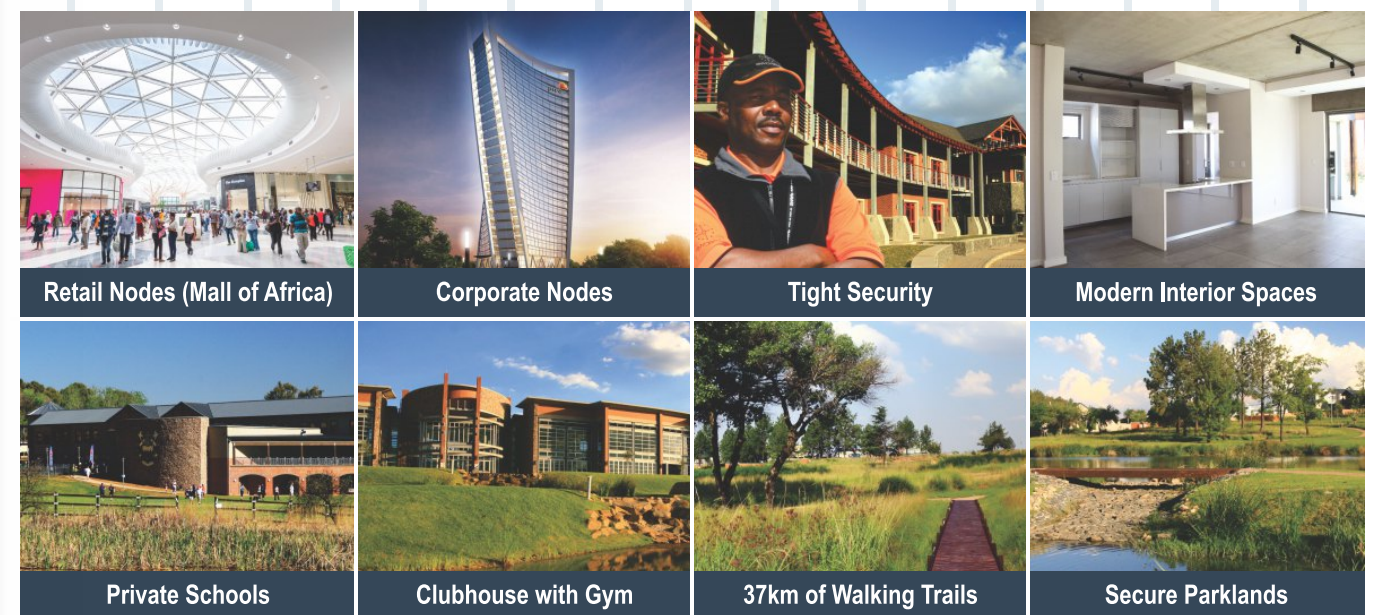
Waterfall has been nicknamed “the land of dreams” and today this development has proven to be worthy of this title due to numerous awards in the international arena. These include the “Best Mixed-use Development in Africa”, “Best Residential Development in Africa” and “Best Retirement Resort in the World” from the CNBC International Property Awards. Within the estates' secure perimeters, residents have access to walking trails, fishing dams, clubhouses, mountain bike tracks, two private schools, modern hospital, two luxurious hotels, numerous retail nodes and two retirement villages.

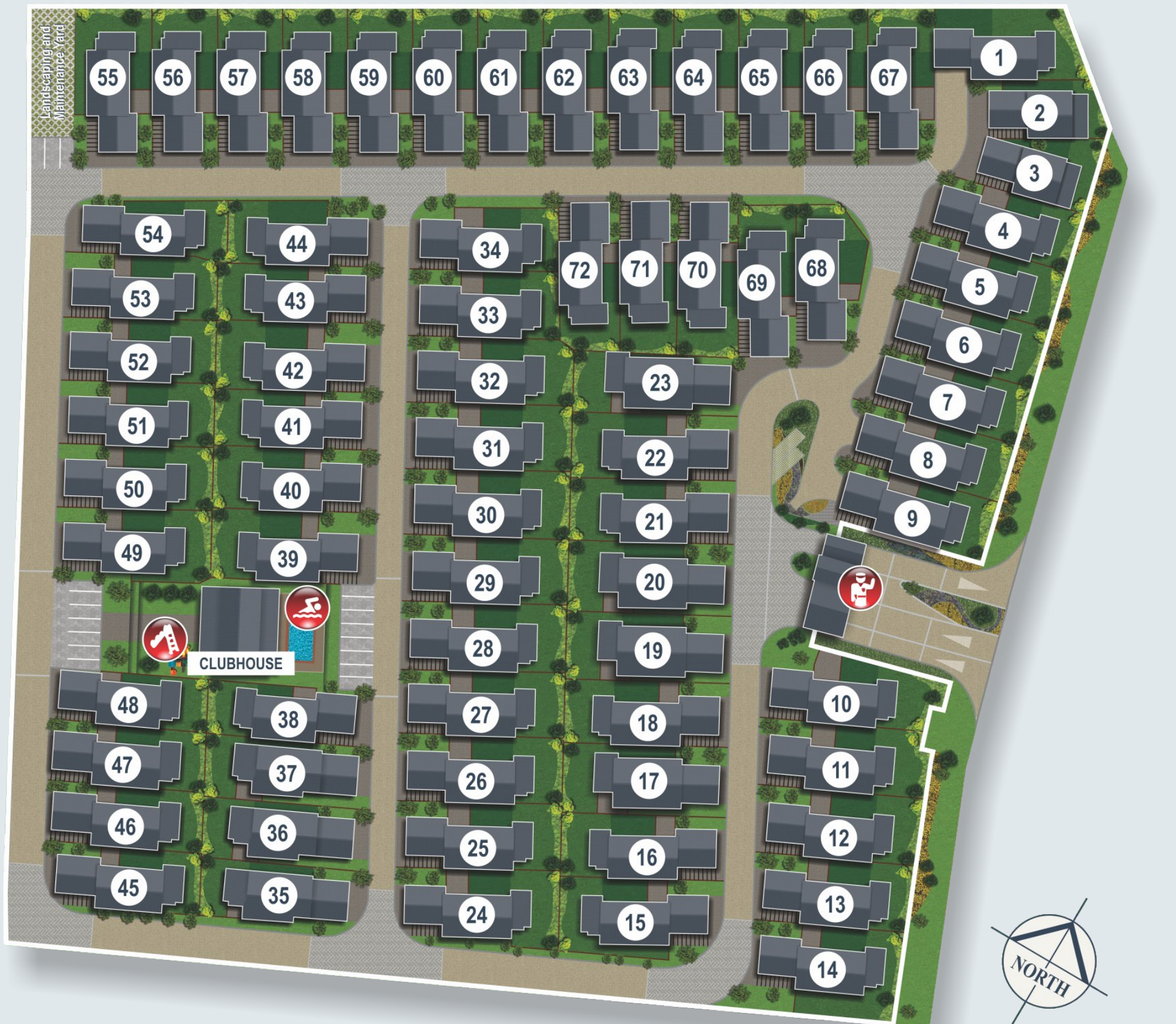


WHY RENT AT THE SHEDS @ WATERFALL?

The Sheds @ Waterfall is a precinct within the overall Waterfall Estates and enjoys access to all its amenities at a fraction of the cost of renting a typical home within Waterfall Estates. These amenities include:

- A world-class 5000m² **clubhouse** with fully equipped double-storey gym and restaurant.
- **Walking trails** that meander through 300 acres of green belt and indigenous parkland.
- Close proximity to **shopping facilities**, like Waterfall Corner and Mall of Africa.
- Numerous **Private Schools** in the area, two of which are located inside Waterfall Estates.
- The Sheds @ Waterfall has an **exclusive clubhouse** with swimming pool and kids' play area.
- **Care-free living** as garden maintenance and all other building maintenance is included.
- Extremely high levels of security with **24 hour access control**.
- Residents will be renting from a big corporate, with a **professional team** dedicated to sorting out issues.

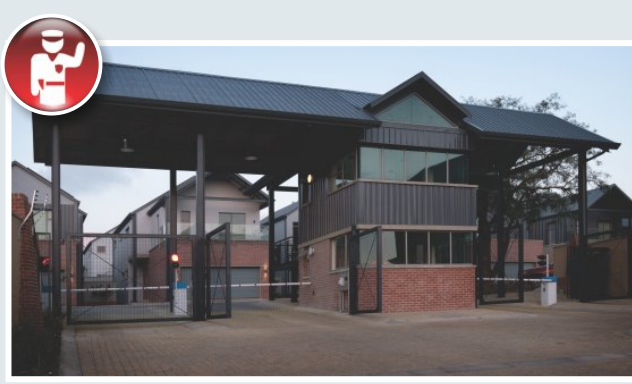


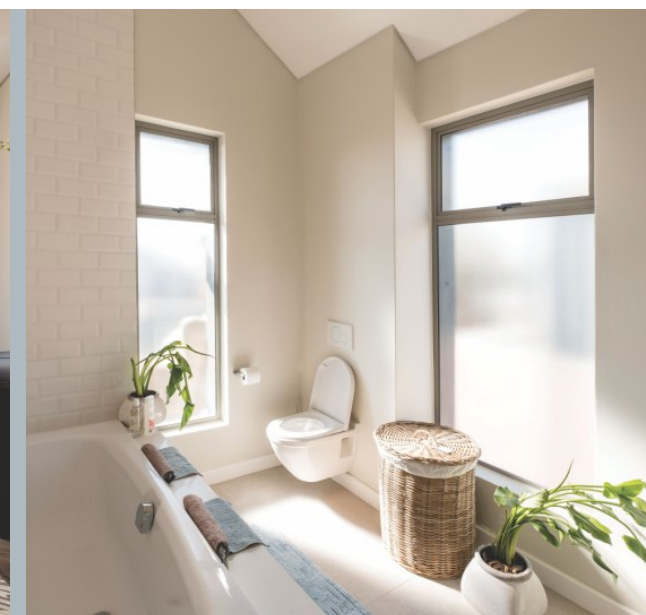
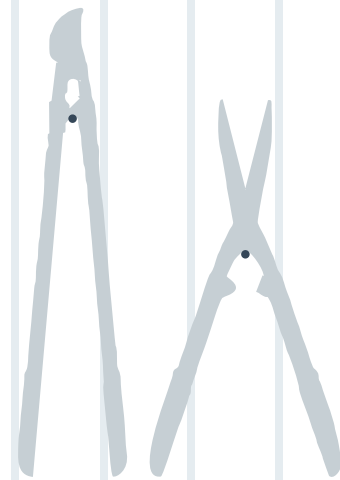


TYPICAL UNIT LAYOUT: TYPE A



TYPICAL UNIT LAYOUT: TYPE B

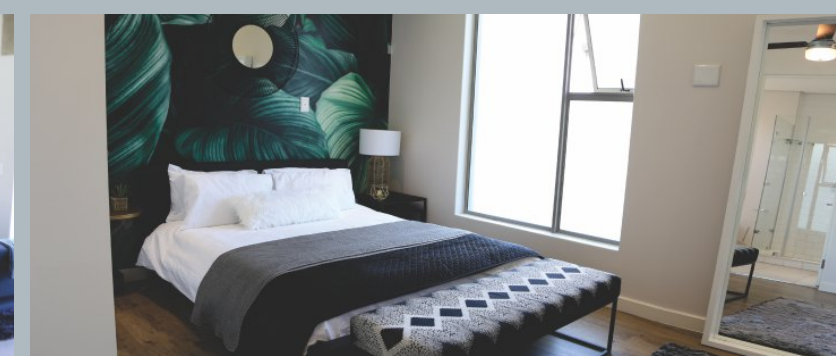




“GOING GREEN” AT THE SHEDS @ WATERFALL

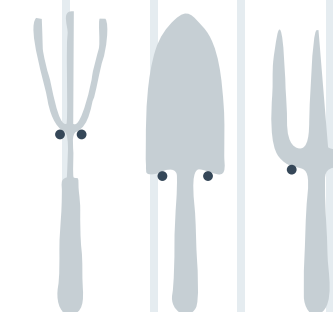
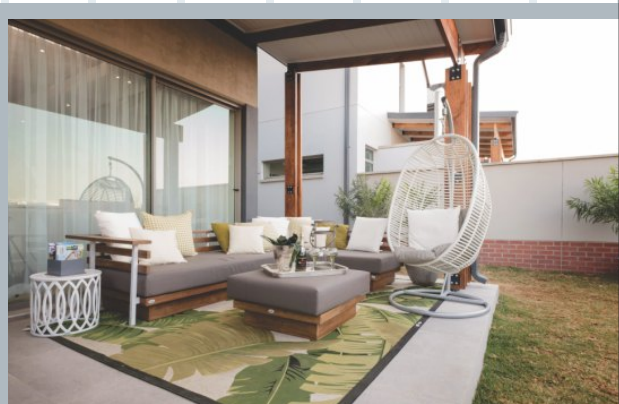
Many initiatives have been implemented to reduce your carbon footprint at The Sheds @ Waterfall:

- Units are built from locally-sourced materials.
- Solar Panels with backup power saves electricity and ensures hot water even during power outages.
- Units are naturally cool during Summer and warm during Winter due to effective insulation in the floor slab.
- This is enhanced by Pratley Pearl plaster as insulator on the walls, which also saves electricity.
- Slow combustion fire places in the units.
- Energy-efficient cooking through gas hobs.
- Water heat pumps which reduces the consumption of electricity.
- From the above mentioned points, it is clear that there is lower energy costs overall.



COMFORT AND OPULENCE WITHIN INDUSTRIAL DESIGN

The Sheds @ Waterfall takes the concept of industrial chic exteriors and interiors and adding an element of opulence and luxury. Whilst elements like exposed concrete, frame-less glass and various forms of steel are used both inside and outside the dwelling – the kitchens and bathrooms are equipped with designer finishes and upmarket fittings. Colours are minimalistic and neutral to allow for personal interpretation of the interiors.



CENTURY
PROPERTY DEVELOPMENTS

houss
RENTALS

Leasing Office

For RENTAL information, please visit www.houss.co.za

Leasing Office Hours:
09h00-17h00, 7 days a week

Other exciting RENTAL projects currently on show:



Waterfall Crescent



The Villas, Waterfall



Rental Houses in Waterfall Estates



The Precinct Luxury Apartments



Carlswald Luxury Apartments



Sagewood Lifestyle Apartments

For more information on any of these developments, contact us on [0800 736825](tel:0800736825)