

The background of the entire page is a detailed illustration of a tropical scene. It features a dense arrangement of large, broad leaves in various shades of green, brown, and orange, suggesting a jungle or rainforest environment. A small, vibrant bird with orange and black plumage is perched on one of the leaves in the lower-left quadrant. The overall aesthetic is lush and naturalistic.

**FIVE**

**ON THIRTEENTH**

**LIFESTYLE APARTMENTS**



Tight Security



Play Parks



Early Learning Centre

# FIVE ON THIRTEENTH

**Expect more...** with a five-star experience from an internationally acclaimed developer. Five on Thirteenth was designed to raise the benchmark for rental complexes in the Northcliff and Fairlands area. Ideally located adjacent to the MTN head office in 14th Avenue, this lifestyle development offers its residents a resort-like lifestyle within a secure, family-friendly environment.

## Estate Features

- **Free uncapped internet** in all unit types.
- **Outdoor facilities:** 4 children's play parks, 2 multi-purpose sports fields, 2 tennis courts, braai areas, basketball courts and pavilions.
- There is an **Early Learning Centre** inside the estate, exclusively for resident pre-school children.
- Conveniently located adjacent to **Reddam House** Northcliff, as well as other fantastic schools in the area.
- This estate utilises **state-of-the-art security** measures, manned 24 hours a day with CCTV camera surveillance.
- **Units are spacious** and easy to furnish with stylish finishes.
- A dedicated **onsite maintenance** team, as well as the full-time Estate Manager, can assist with any issues.
- Residents could rent a **secure storeroom**, and the estate also offers a reliable onsite **laundromat service**.



### 5ive on Thirteenth Lifestyle Hub

- |                         |                               |
|-------------------------|-------------------------------|
| 1. Family Restaurant    | 5. Main Swimming Pool         |
| 2. Sky Bar / Board Room | 6. Gym Studios / Change Rooms |
| 3. Fire Bomas           | 7. Gym Cardio/Weights/Toning  |
| 4. Family Swimming Pool | 8. Outdoor Gym                |

“ Five different play areas,  
Four sports courts,  
Three apartment configurations,  
Two gate houses,  
One place to call ‘home’.”

#### Lifestyle Hub Features

- A **fully equipped gym** with general toning areas, weights training, cardio-vascular circuits and outdoor equipment. Downstairs change rooms with private steam rooms.
- Residents enjoy access to **free** daily gym classes, **free** weekly tennis coaching and hip-hop dance classes.
- A **family-friendly restaurant** is the perfect venue for a sociable sit-down meal or convenient take-away.
- A **Sky Bar** serves exotic cocktails whilst providing breathtaking views of the area. This is the venue to mingle!
- A fully-serviced **function room** can be booked out by residents for private meetings and special events.
- Loungers and umbrellas surround two **swimming pools**; one for adults and a shallow version for the entire family.
- The Lifestyle Hub is the core of our residents' **social life** with regular events – such as monthly outdoor movies, affordable dinner specials, quiz nights and live music.
- The **children's facilities** in the estate include a “splash park” with fountains along with 4 different play parks. These facilities were designed and installed to accommodate children of different ages.



Family Restaurant



Sky Bar



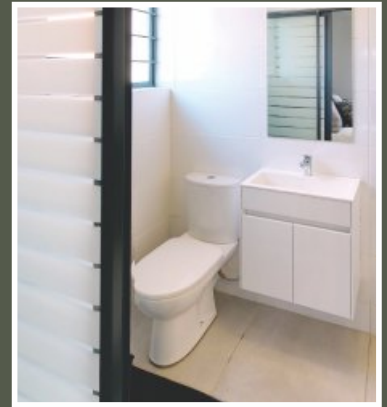
Indoor/Outdoor Gym



- |   |   |   |   |   |  |
|---|---|---|---|---|--|
|  Gatehouse 1 with Leasing/Admin Office |  Restaurant with Sky Bar |  Children's Play Parks       |  Children's Splash Park    |  Pavilions / Clubhouses                                    |  Spa / Salon<br><i>(underneath the sports fields)</i>       |
|  Gatehouse 2                           |  Indoor/Outdoor Gym      |  Multi-purpose Sports Fields |  Reddford House Northcliff |  Maintenance Yard  |  Convenience store<br><i>(underneath the sports fields)</i> |
|  Parking Decks (2 Levels)              |  Braai Pavilions         |  Tennis / Basketball Court   |  Early Learning Centre     |  Storage Facility<br><i>(underneath the sports fields)</i> |  Laundromat<br><i>(underneath the sports fields)</i>        |

# Unit Layouts:

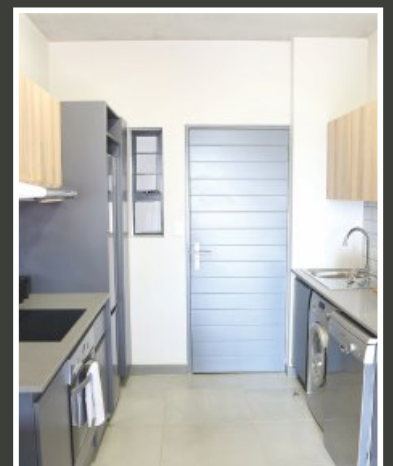
*"Units are spacious and easy to furnish"*



-  1 x Bedroom
  -  1 x Bathroom
- Unit Size: 32m<sup>2</sup>



-  2 x Bedrooms
  -  2 x Bathrooms
- Unit Size: 67m<sup>2</sup> (incl. Patio)



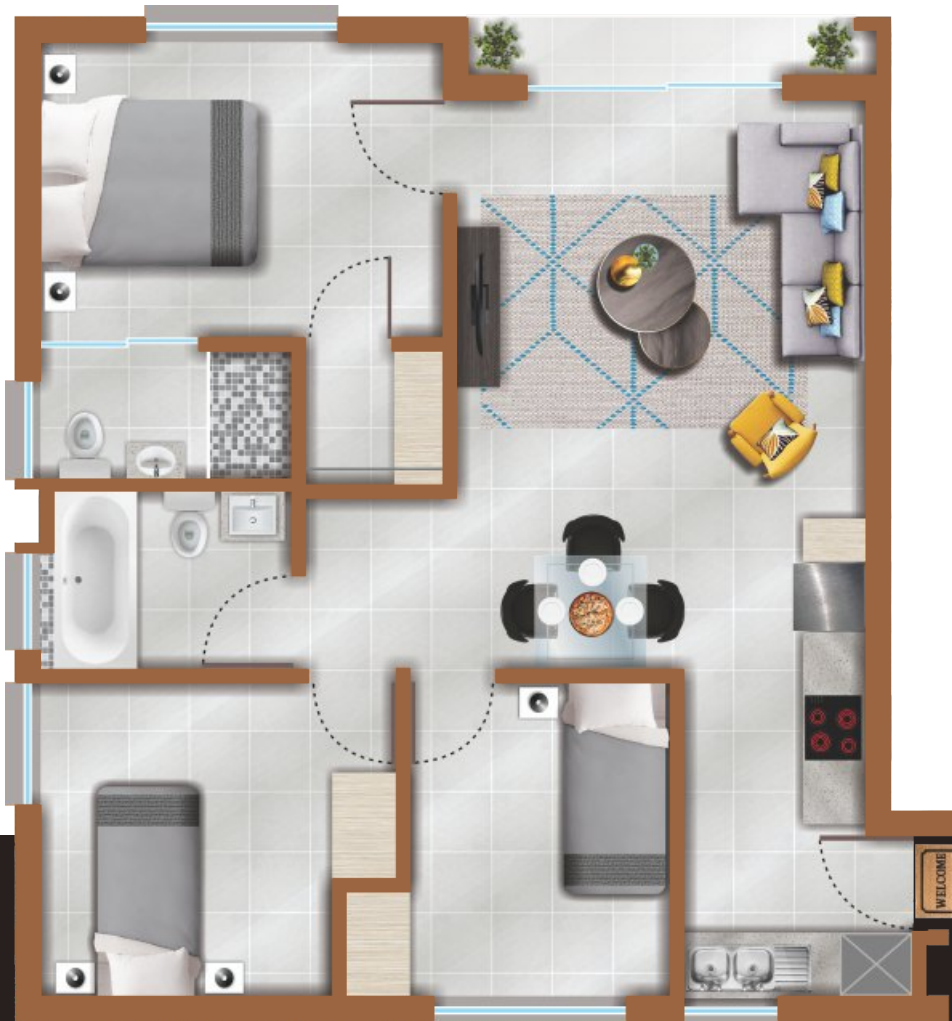
**Please Note:** Unit layouts may be mirrored according to their position within the building. Ensure that you have seen the actual unit, prior to signing a lease agreement, as images contained in this brochure are mere artist's impressions. Unit sizes include the balcony areas.



 1 x Bedroom

 1 x Bathroom

Unit Size: 45m<sup>2</sup> (incl. Patio)



 3 x Bedrooms

 2 x Bathrooms

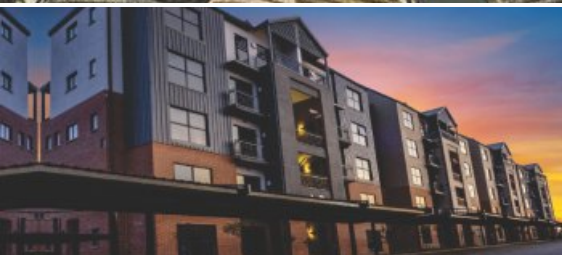
Unit Size: 80m<sup>2</sup> (incl. Patio)





For more information, please visit [www.houss.co.za](http://www.houss.co.za)

Rental office hours:  
09h00-17h00, 7 days a week



**The Precinct Luxury Apartments**  
*Located on Allandale Rd, Waterfall, Joburg*



**Carlswald Luxury Apartments**  
*Located on Tambotie Rd, Midrand, Joburg*



**The Oval Apartments @ The Hills**  
*Located on Garsfontein Rd, Mooikloof, Pretoria*



**The Parks, Riversands**  
*Located next to Steyn City, Riversands, Joburg*



**The Villas, Waterfall**  
*Located inside Waterfall Estates, Joburg*



**Crowthorne Luxury Apartments**  
*Located on Whisken Rd, Midrand, Joburg*

For more information on any of these developments, contact us on [011 300 8702](tel:0113008702)