



 HELDERFONTEIN
NEXUS
LIFESTYLE APARTMENTS

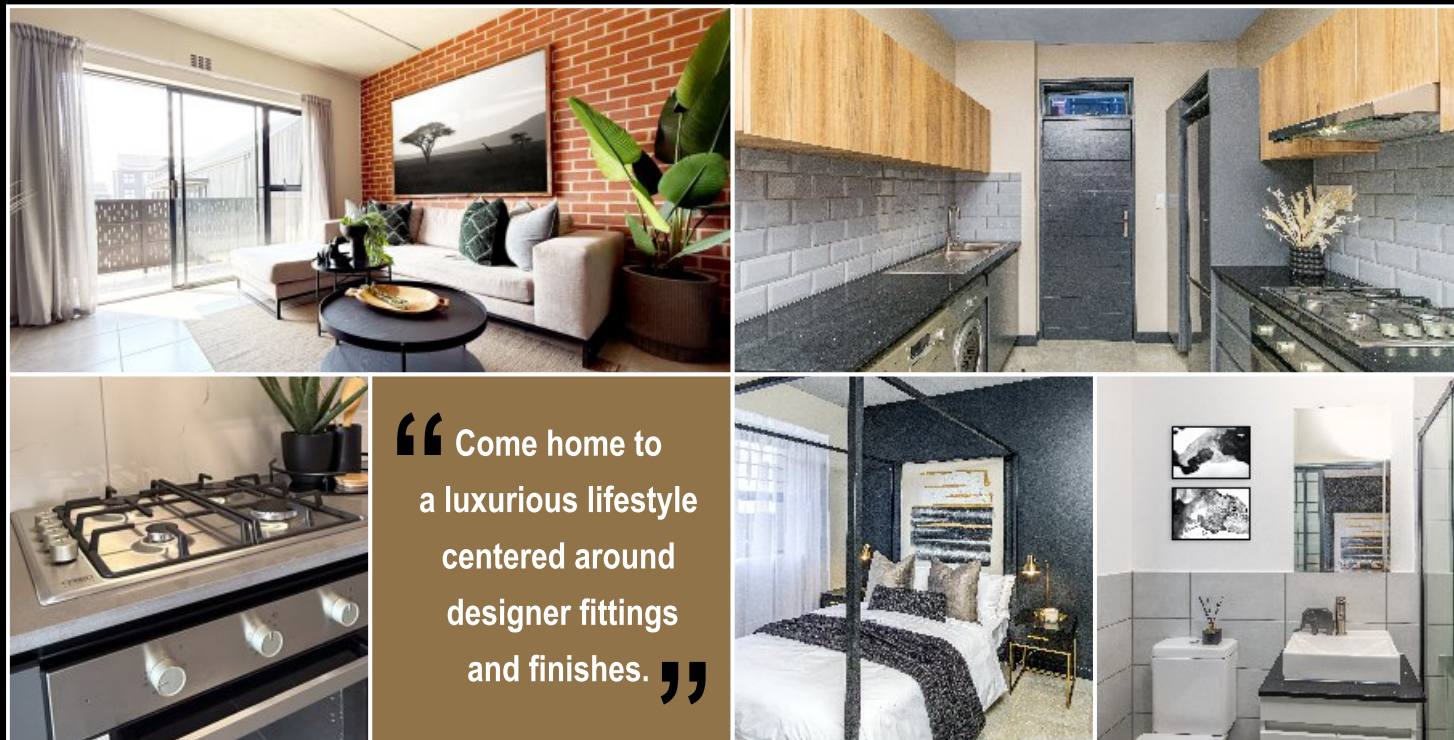


**HELDERFONTEIN
NEXUS**
LIFESTYLE APARTMENTS

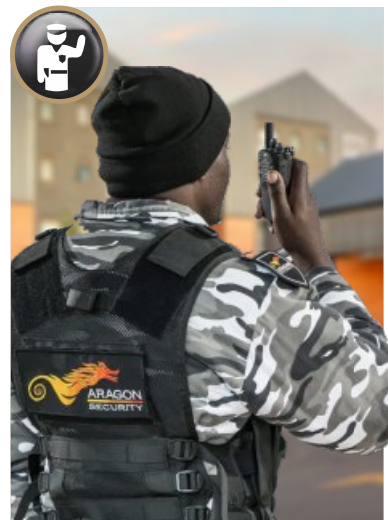
Taking the 'next step' in your journey should always be exciting. Helderfontein Nexus Lifestyle Apartments was designed with comfort and hassle-free lifestyles in mind. The convenient location ensures quick access to major shopping nodes, whilst the tight security measures bring peace of mind to all residents. Here, you can avoid inconveniences, like load-shedding and water outages.



- Helderfontein Nexus is conveniently located adjacent to the prestigious Helderfontein Residential Estate, on Winnie Mandela (ex William Nicol) Drive by Steyn City.
- The estate makes use of indigenous landscaping, solar energy, grey water reticulation; ensuring that common costs are kept to a minimum.
- Features include gas hobs for cooking, electricity backup for certain plugs and all lighting as well as water backup – giving peace of mind during unplanned outages.
- Tight security through a single gatehouse with strict access control for all visitors and deliveries, allowing residents to enjoy a carefree lifestyle.
- The spacious units are equipped with free internet access and come in 3-, 2-, 1-bedroom configurations.
- Units were designed to be modern and spacious, with impressive fittings and finishes.
- The clubhouse offers lounge areas and a meeting room. It overlooks the children's play areas, providing parents with sanctuary whilst their little ones enjoy themselves.
- A comprehensive gym offers FREE weekly group classes; cardio-vascular training, weights, general toning circuit and studio for aerobics, spinning, Pilates etc.
- Outdoor facilities include a Padel court, multi-purpose court, braai areas and numerous children's play parks.



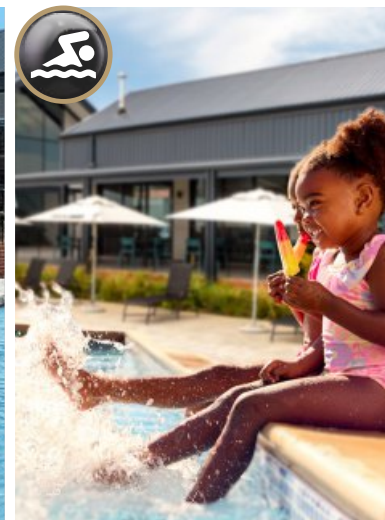
Tight Security



Splash Zone



Swimming Pool



Comprehensive Gym



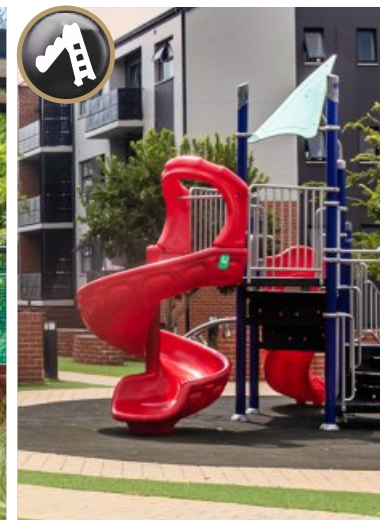
Padel Court



Braai Facilities



Kids' Play Parks



Multi-Purpose Court



Typical 3-Bedroom Unit

- 3 x Bedrooms
- 2 x Bathrooms

Unit designs vary - this is a typical layout
Unit Size: 77m²

Please Note: Unit layouts may be mirrored according to their position within the building. Please ensure you have visited the actual unit before signing the lease agreement.

Typical 2-Bedroom Unit

- 2 x Bedrooms
- 2 x Bathrooms

Unit designs vary - this is a typical layout
Unit Size: 68m²

Typical 1-Bedroom Unit (Large)

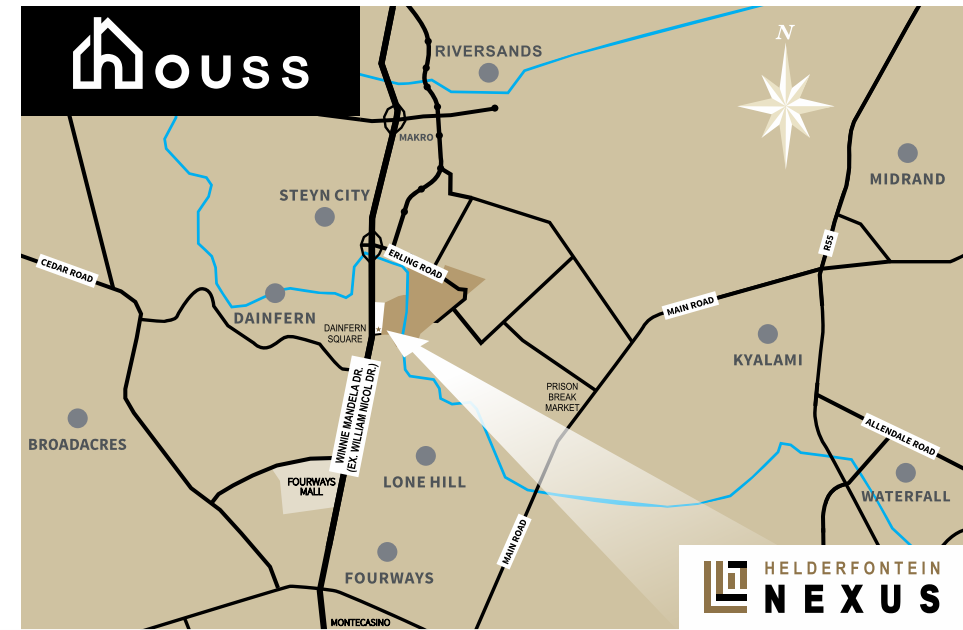
- 1 x Bedroom
- 1 x Bathroom

Unit designs vary - this is a typical layout
Unit Size: 46m²

Typical 1-Bedroom Unit

- 1 x Bedroom
- 1 x Bathroom

Unit designs vary - this is a typical layout
Unit Size: 34m²



Enquire NOW:

For more information, please visit www.houss.co.za

Sales office hours: 09h00-17h00, 7 days a week

Other exciting RENTAL projects, based in Johannesburg, by HOUSS Rentals:



The Precinct Luxury Apartments
Located on Allandale Rd, Waterfall, Joburg



Ndlovu Lifestyle Apartments
Located on Olifantsfontein Rd, Midrand



Indawo Lifestyle Apartments
Located on Allandale Rd, Waterfall, Joburg



The Parks, Riversands
Located next to Steyn City, Riversands, Joburg



The Villas, Waterfall
Located inside Waterfall Estates, Joburg



5ive on Thirteenth Lifestyle Apartments
Located on 13th Ave, Fairlands/Northcliff

For more information on any of these developments, contact us on 011 300 8702 or visit our website on www.houss.co.za